

# DOMINATOR 300

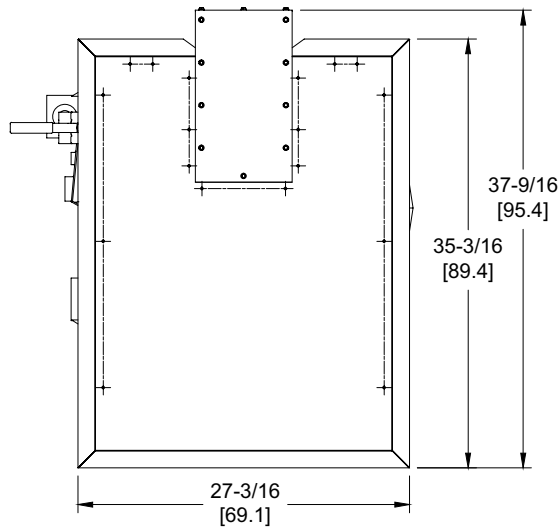
## Category I or Category III Appliance

(see Installation and Operation Manual for venting information)

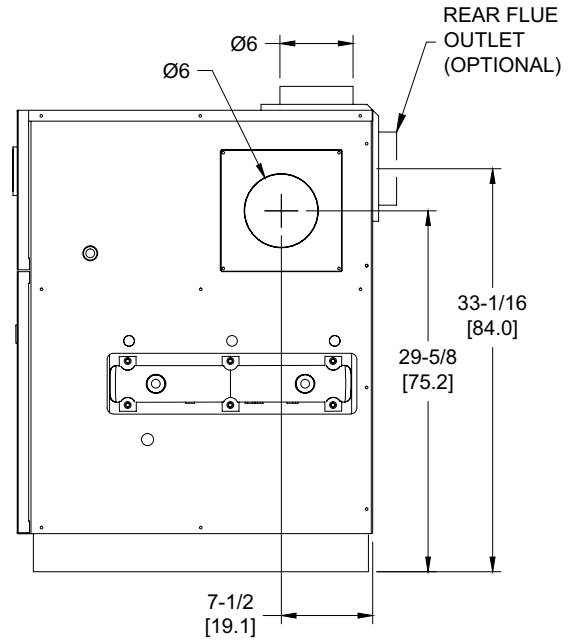
### CODE OPTIONS

CSD-1

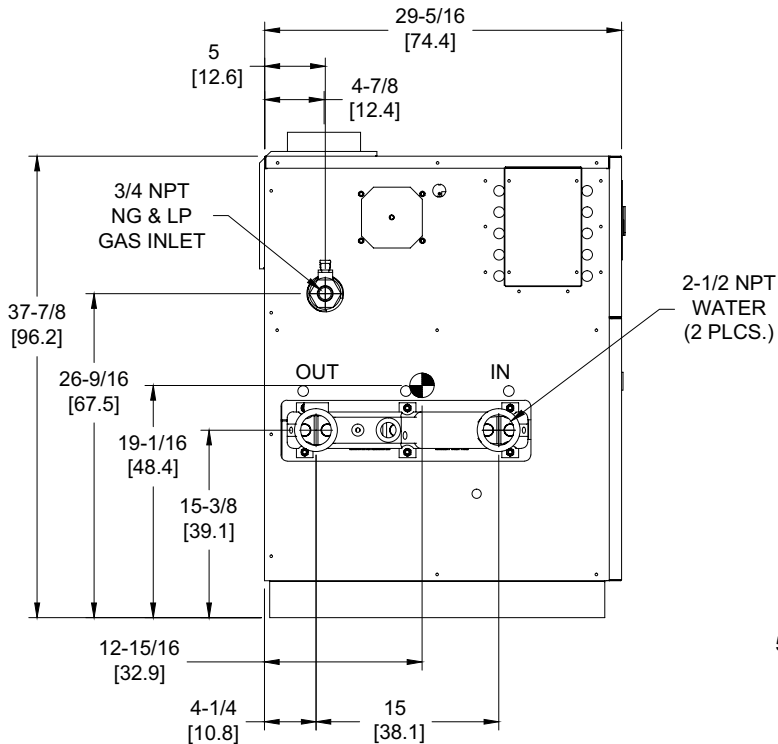
UTC Lockout/Reset Control  
Manual Reset LWCO



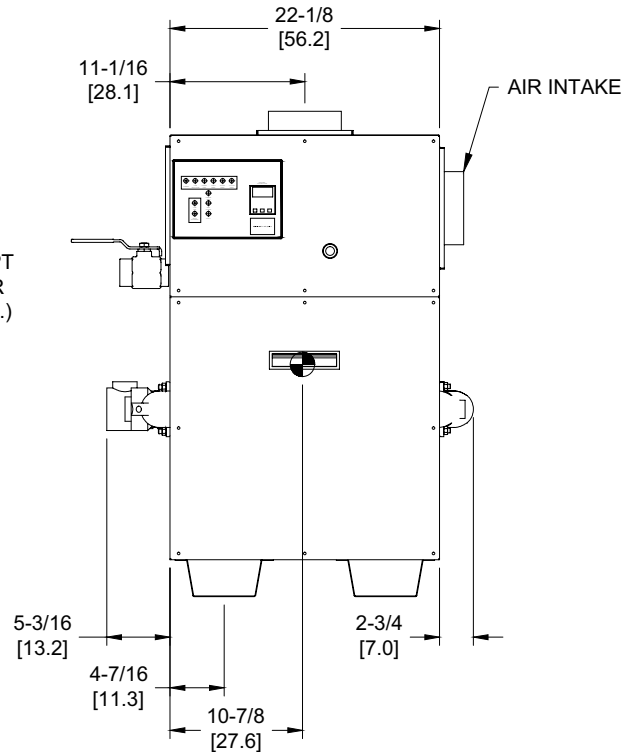
OUTDOOR TOP VIEW



RIGHT VIEW



LEFT VIEW



FRONT VIEW

RSUB-27-E

**Boilers & Water Heaters not available for sale in Canada due to NRCAN regulations.**

#### Notes:

1. Dimensions are approximate and should not be used to "rough-in" equipment.
2. Dimensions are subject to change without notice.
3. All dimensions are in inches (cm).
4. ● Symbol indicates center of gravity.

## BOILER CERTIFIED RATINGS & CAPACITIES

<b>Fuel Type</b>	Natural/Propane Gas	<b>Boiler FLA</b>	3.8*
<b>Input BTU/hr.</b>	300,000 / 88 kW	<b>Min. Gas Pressure Required</b>	7" WC**
<b>Output BTU/hr.</b>	252,000 / 74 kW	<b>Max. Gas Pressure Allowed</b>	14" WC
<b>Electrical Requirements</b>	120VAC/ 1 ph/ 60 hz	<b>Operating Weight</b>	416 lbs. / 189 kg.

## BOILER / WATER HEATER TRIM & CONTROLS

<b>Main Gas Valve</b>	Honeywell VR8304 3/4"	<b>Pilot Valve</b>	Honeywell VR8304
<b>Firing Valve</b>	Honeywell B200T1025 3/4"	<b>Air Switch</b>	Cleveland RSS-495
<b>Ignition Control</b>	UTC 1003-61A	<b>Blower Motor</b>	1/5 hp - FLA 3.0
<b>High Limit</b>	Honeywell L4008E	<b>Relief Valve - DW</b>	3/4" x 3/4" set @ 125 psi
		<b>Relief Valve - DB</b>	3/4" x 3/4" set @ 50 psi
		<b>Flow Switch</b>	TACO

## A.S.M.E.

<b>ASME Sect IV Htg Surface</b>	38.0 Sq. Ft. / 3.53 Sq. M.	<b>Design Data</b>	Max. 160 psig & 250°F
<b>Water Volume</b>	3.5 gal / 13.2 Liters		

\* Add circulator amps.

\*\* For incoming gas pressures lower than 7"WC natural or 11"WC propane, consult factory.


## BOILER TEMPERATURE RISE / PRESSURE DROP

15°F / 8.3°C				20°F / 11.1°C				25°F / 13.9°C			
Flow Rate		Pressure Drop		Flow Rate		Pressure Drop		Flow Rate		Pressure Drop	
GPM	L/s	Ft	kPa	GPM	L/s	Ft	kPa	GPM	L/s	Ft	kPa
33.6	2.1	0.21	0.6	25.2	1.6	0.13	0.4	20.2	1.3	0.08	0.2

## WATER HEATER HOURLY RECOVERY CAPACITY (GPH & LPH)

40°F	22°C	60°F	33°C	80°F	44°C	100°F	56°C	120°F	67°C	140°F	78°C
720	2723	480	1815	360	1361	288	1089	240	908	206	778

Boilers & Water Heaters not available for sale in Canada due to NRCan regulations.

<b>REP FIRM</b>	_____	<div><b>DOMINATOR 300</b></div> <div><b>Category I or Category III Appliance</b></div> <div>(see Installation and Operation Manual for venting information)</div> <div>  <div> A Division of Mestek, Inc.  Westfield, MA 01085  (413) 564-5515 </div> </div>
<b>SUBMITTED BY</b>	_____	
<b>JOB NAME</b>	_____	
<b>ARCHITECT</b>	_____	
<b>ENGINEER</b>	_____	
<b>CONTRACTOR</b>	_____	
<b>DATE</b>	_____	

# DOMINATOR 400

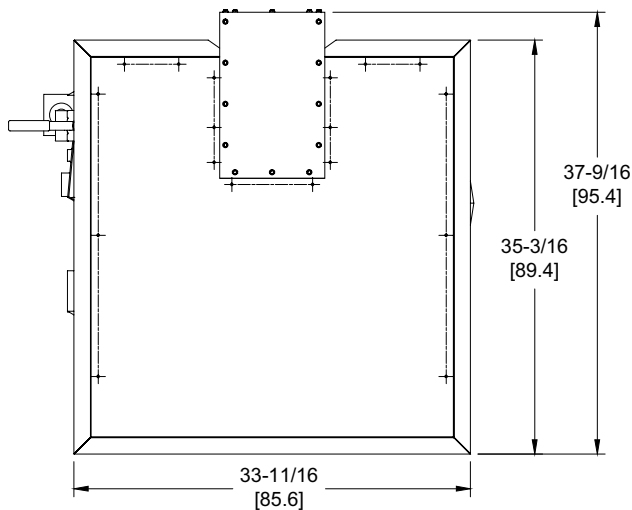
## Category I or Category III Appliance

(see Installation and Operation Manual for venting information)

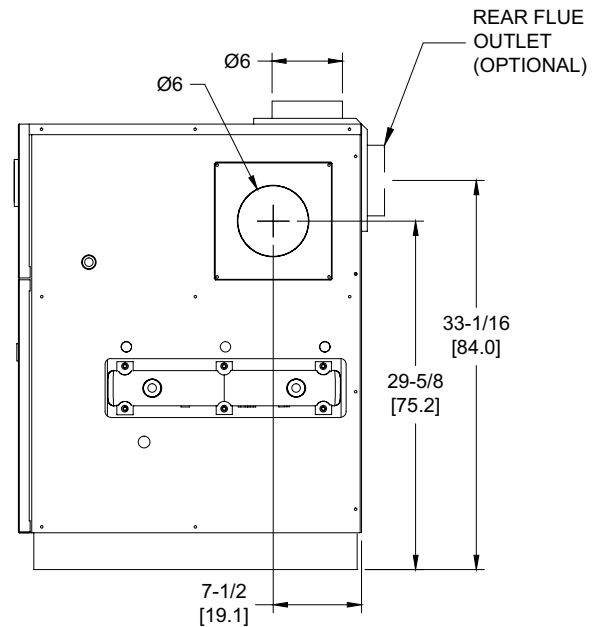
### CODE OPTIONS

CSD-1

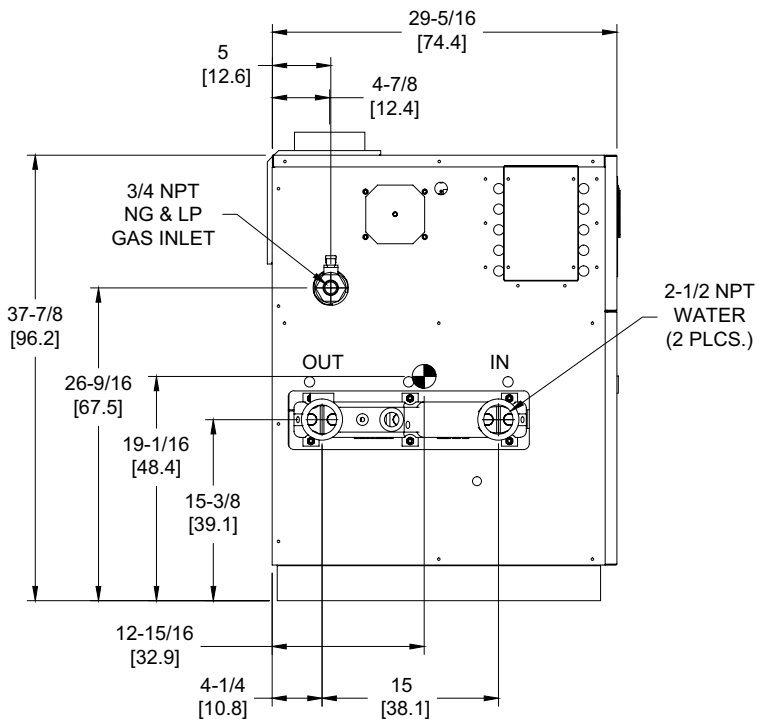
UTC Lockout/Reset Control  
Manual Reset LWCO



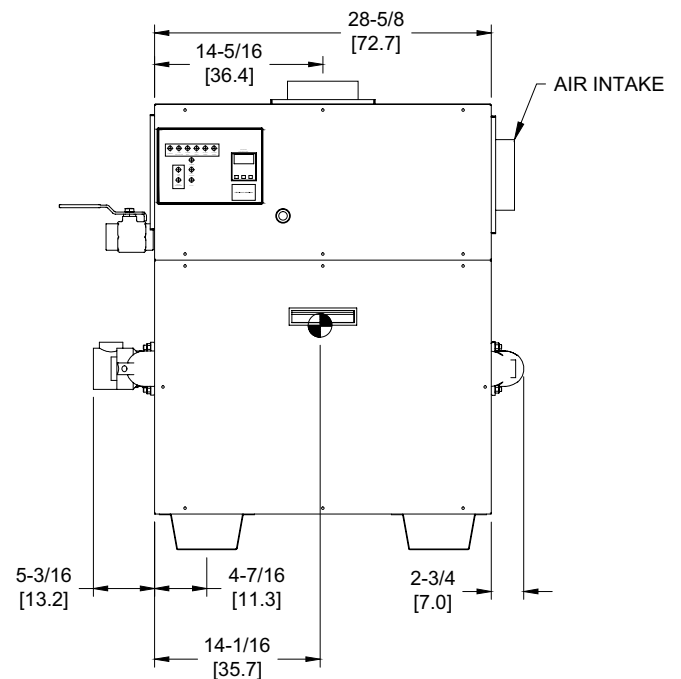
OUTDOOR TOP VIEW



RIGHT VIEW



LEFT VIEW



FRONT VIEW

**Boilers & Water Heaters not available for sale in Canada due to NRCAN regulations.**

RSUB-28-E

### Notes:

1. Dimensions are approximate and should not be used to "rough-in" equipment.
2. Dimensions are subject to change without notice.
3. All dimensions are in inches (cm).
4. ● Symbol indicates center of gravity.

## BOILER CERTIFIED RATINGS & CAPACITIES

<b>Fuel Type</b>	Natural/Propane Gas	<b>Boiler FLA</b>	3.8*
<b>Input BTU/hr.</b>	399,000 / 117 kW	<b>Min. Gas Pressure Required</b>	7" WC**
<b>Output BTU/hr.</b>	335,160 / 98 kW	<b>Max. Gas Pressure Allowed</b>	14" WC
<b>Electrical Requirements</b>	120VAC/ 1 ph/ 60 hz	<b>Operating Weight</b>	490 lbs. / 222 kg.

## BOILER / WATER HEATER TRIM & CONTROLS

<b>Main Gas Valve</b>	Honeywell VR8305 3/4"	<b>Pilot Valve</b>	Honeywell VR8205
<b>Firing Valve</b>	Honeywell B200T1025 3/4"	<b>Air Switch</b>	Cleveland RSS-495
<b>Ignition Control</b>	UTC 1003-61A	<b>Blower Motor</b>	1/5 hp - FLA 3.0
<b>Operating Control</b>	Tekmar BTC-2PA	<b>Relief Valve - DB</b>	3/4" x 3/4" set @ 50 psi
<b>High Limit</b>	Honeywell L4008E	<b>Flow Switch</b>	TACO

## A.S.M.E.

<b>ASME Sect IV Htg Surface</b>	50.0 Sq. Ft. / 4.65 Sq. M.	<b>Design Data</b>	Max. 160 psig & 250°F
<b>Water Volume</b>	3.6 gal / 13.6 Liters		


\* Add circulator amps.

\*\* For incoming gas pressures lower than 7"WC natural or 11"WC propane, consult factory.

## BOILER TEMPERATURE RISE / PRESSURE DROP

15°F / 8.3°C				20°F / 11.1°C				25°F / 13.9°C			
Flow Rate		Pressure Drop		Flow Rate		Pressure Drop		Flow Rate		Pressure Drop	
GPM	L/s	Ft	kPa	GPM	L/s	Ft	kPa	GPM	L/s	Ft	kPa
44.7	2.8	0.48	1.4	33.5	2.1	0.28	0.8	26.8	1.7	0.19	0.5

Boilers & Water Heaters not available for sale in Canada due to NRCan regulations.

<b>REP FIRM</b>	_____	<h1>DOMINATOR 400</h1> <p><b>Category I or Category III Appliance</b> (see Installation and Operation Manual for venting information)</p>  <p><b>RBI</b>® RELIABLE. BOLD. INNOVATIVE.</p>
<b>SUBMITTED BY</b>	_____	
<b>JOB NAME</b>	_____	
<b>ARCHITECT</b>	_____	
<b>ENGINEER</b>	_____	
<b>CONTRACTOR</b>	_____	
<b>DATE</b>	_____	<p>A Division of Mestek, Inc. Westfield, MA 01085 (413) 564-5515</p>

# DOMINATOR 600

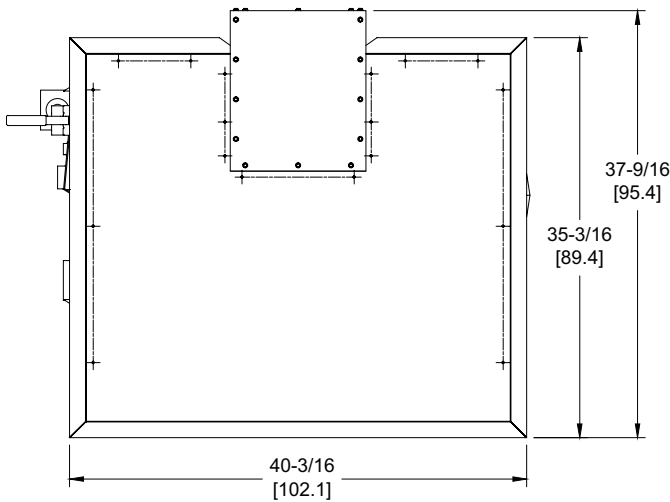
## Category I or Category III Appliance

(see Installation and Operation Manual for venting information)

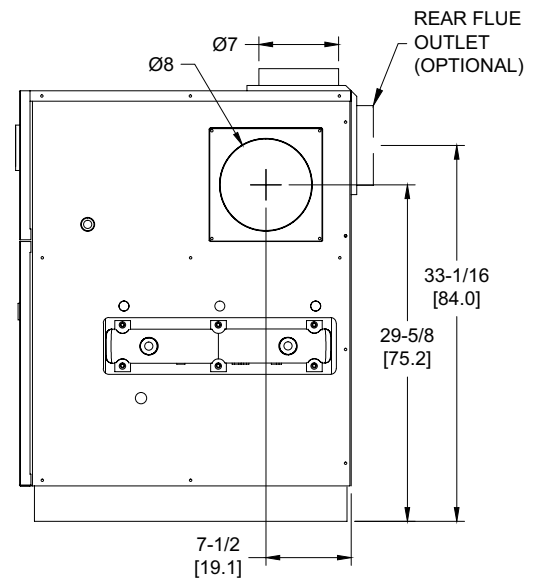
### CODE OPTIONS

CSD-1

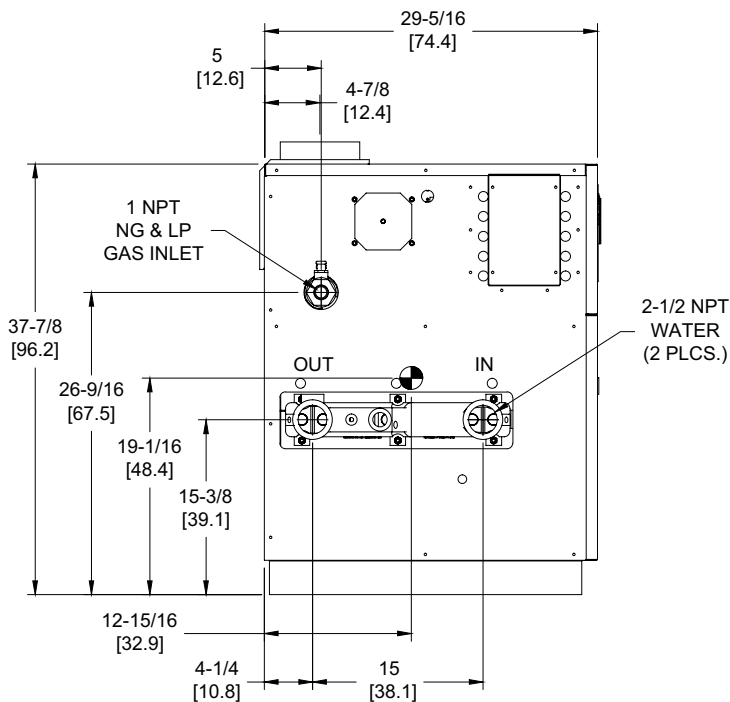
UTC Lockout/Reset Control  
Manual Reset LWCO



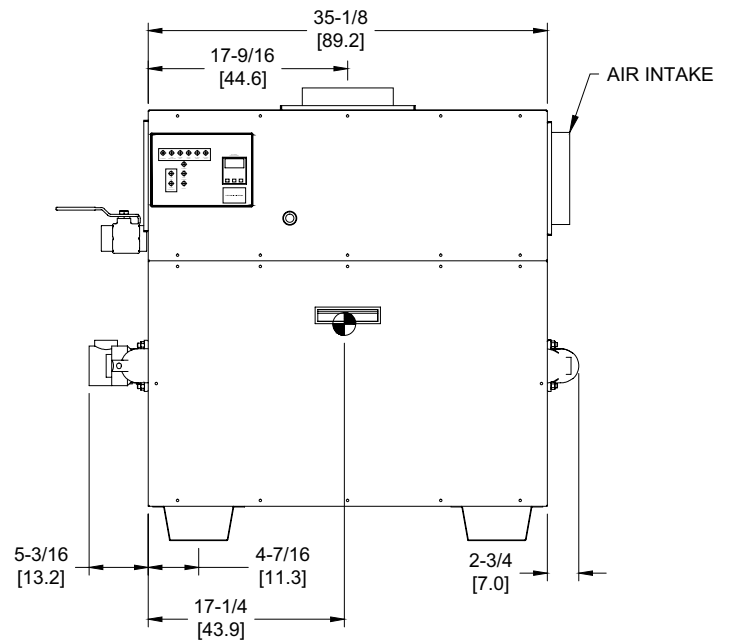
OUTDOOR TOP VIEW



RIGHT VIEW



LEFT VIEW




FRONT VIEW

RSUB-29-E

**Boilers & Water Heaters not available for sale in Canada due to NRCAN regulations.**

#### Notes:

1. Dimensions are approximate and should not be used to "rough-in" equipment.
2. Dimensions are subject to change without notice.
3. All dimensions are in inches (cm).
4.  Symbol indicates center of gravity.

SDOM-600-11

## BOILER CERTIFIED RATINGS & CAPACITIES

<b>Fuel Type</b>	Natural/Propane Gas	<b>Boiler FLA</b>	3.8*
<b>Input BTU/hr.</b>	600,000 / 176 kW	<b>Min. Gas Pressure Required</b>	7" WC**
<b>Output BTU/hr.</b>	504,000 / 148 kW	<b>Max. Gas Pressure Allowed</b>	14" WC
<b>Electrical Requirements</b>	120VAC/ 1 ph/ 60 hz	<b>Operating Weight</b>	532 lbs. / 242 kg.

## BOILER / WATER HEATER TRIM & CONTROLS

<b>Main Gas Valve</b>	Honeywell V8944 1"	<b>Pilot Valve</b>	Honeywell VR8205
<b>Firing Valve</b>	Honeywell B200T1033 1"	<b>Air Switch</b>	Cleveland RSS-495
<b>Safety Valve</b>	ASCO L8214G 1"	<b>Blower Motor</b>	1/5 hp - FLA 3.0
<b>Ignition Control</b>	UTC 1003-61A	<b>Relief Valve - DW</b>	3/4" x 3/4" set @ 125 psi
<b>Operating Control</b>	Tekmar BTC-2PA	<b>Relief Valve - DB</b>	3/4" x 3/4" set @ 50 psi
<b>High Limit</b>	Honeywell L4008E	<b>Flow Switch</b>	TACO

## A.S.M.E.

<b>ASME Sect IV Htg Surface</b>	64.0 Sq. Ft. / 5.95 Sq. M.	<b>Design Data</b>	Max. 160 psig & 250°F
<b>Water Volume</b>	3.8 gal / 14.5 Liters		

\* Add circulator amps.

\*\* For incoming gas pressures lower than 7"WC natural or 11"WC propane, consult factory.


## BOILER TEMPERATURE RISE / PRESSURE DROP

15°F / 8.3°C				20°F / 11.1°C				25°F / 13.9°C				30°F / 16.7°C			
Flow Rate		Pressure Drop		Flow Rate		Pressure Drop		Flow Rate		Pressure Drop		Flow Rate		Pressure Drop	
GPM	L/s	Ft	kPa	GPM	L/s	Ft	kPa	GPM	L/s	Ft	kPa	GPM	L/s	Ft	kPa
67.2	4.2	1.27	3.7	50.4	3.2	0.75	2.2	40.3	2.5	0.49	1.5	33.6	2.1	0.35	1.0

## WATER HEATER HOURLY RECOVERY CAPACITY (GPH & LPH)

40°F	22°C	60°F	33°C	80°F	44°C	100°F	56°C	120°F	67°C	140°F	78°C
1495	5650	996	3766	747	2825	598	2260	498	1883	427	1614

Boilers & Water Heaters not available for sale in Canada due to NRCAN regulations.

<b>REP FIRM</b>	_____	<b>DOMINATOR 600</b>
<b>SUBMITTED BY</b>	_____	
<b>JOB NAME</b>	_____	
<b>ARCHITECT</b>	_____	
<b>ENGINEER</b>	_____	
<b>CONTRACTOR</b>	_____	
<b>DATE</b>	_____	<b>Category I or Category III Appliance</b> (see Installation and Operation Manual for venting information)
		 <b>RELIABLE. BOLD. INNOVATIVE.</b>
		A Division of Mestek, Inc. Westfield, MA 01085 (413) 564-5515

# DOMINATOR 750

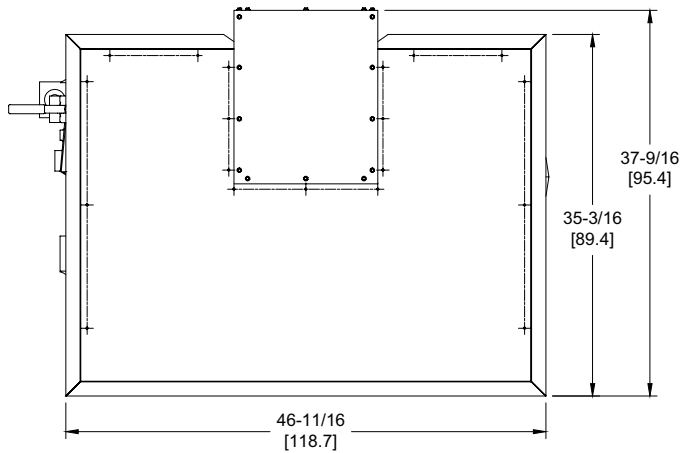
## Category I or Category III Appliance

(see Installation and Operation Manual for venting information)

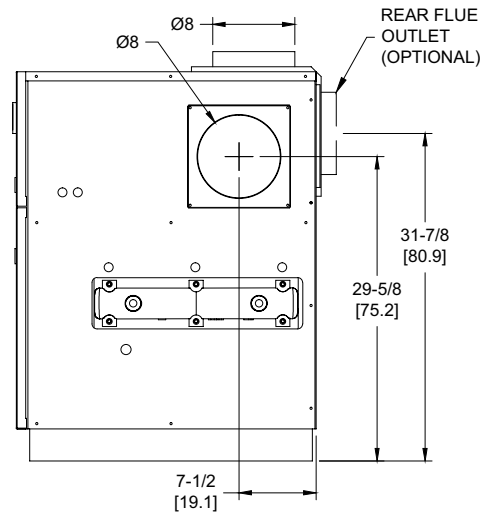
### CODE OPTIONS

CSD-1

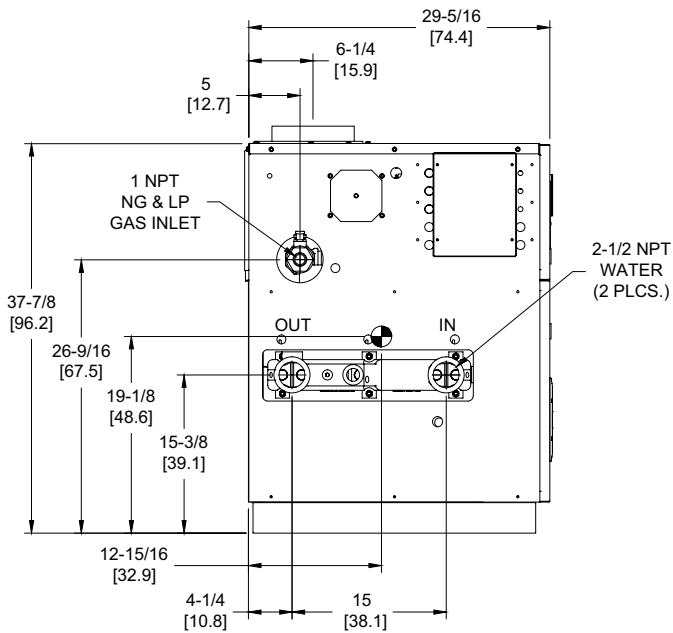
UTC Lockout/Reset Control  
Manual Reset LWCO



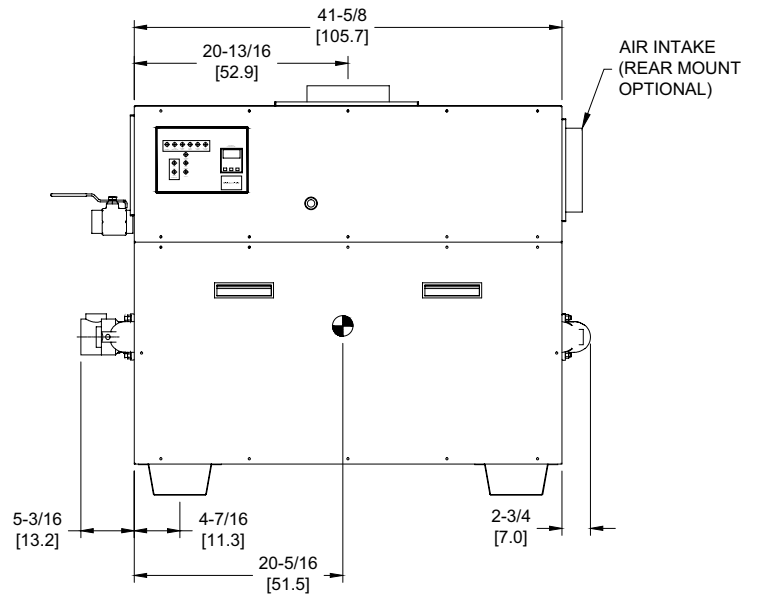
OUTDOOR TOP VIEW



RIGHT VIEW



LEFT VIEW




FRONT VIEW

RSUB-30-E

**Boilers & Water Heaters not available for sale in Canada due to NRCAN regulations.**

#### Notes:

1. Dimensions are approximate and should not be used to "rough-in" equipment.
2. Dimensions are subject to change without notice.
3. All dimensions are in inches (cm).
4.  Symbol indicates center of gravity.

SDOM-750-11

## BOILER CERTIFIED RATINGS & CAPACITIES

<b>Fuel Type</b>	Natural/Propane Gas	<b>Boiler FLA</b>	5.9*
<b>Input BTU/hr.</b>	750,000 / 220 kW	<b>Min. Gas Pressure Required</b>	7" WC**
<b>Output BTU/hr.</b>	630,000 / 185 kW	<b>Max. Gas Pressure Allowed</b>	14" WC
<b>Electrical Requirements</b>	120VAC/ 1 ph/ 60 hz	<b>Operating Weight</b>	573 lbs. / 260 kg.

## BOILER / WATER HEATER TRIM & CONTROLS

<b>Main Gas Valve</b>	Honeywell V8944 1"	<b>Pilot Valve</b>	Honeywell VR8205
<b>Firing Valve</b>	Honeywell B200T1033 1"	<b>Air Switch</b>	Cleveland RSS-495
<b>Safety Valve</b>	ASCO L8214G 1"	<b>Blower Motor</b>	1/4 hp - FLA 5.1
<b>Ignition Control</b>	UTC 1003-61A	<b>Relief Valve - DW</b>	3/4" x 3/4" set @ 125 psi
<b>Operating Control</b>	Tekmar BTC-2PA	<b>Relief Valve - DB</b>	3/4" x 3/4" set @ 50 psi
<b>High Limit</b>	Honeywell L4008E	<b>Flow Switch</b>	TACO

## A.S.M.E.

<b>ASME Sect IV Htg Surface</b>	77.0 Sq. Ft. / 7.15 Sq. M.	<b>Design Data</b>	Max. 160 psig & 250°F
<b>Water Volume</b>	3.9 gal / 14.9 Liters		

\* Add circulator amps.

\*\* For incoming gas pressures lower than 7"WC natural or 11"WC propane, consult factory.


## BOILER TEMPERATURE RISE / PRESSURE DROP

20°F / 11.1°C				25°F / 13.9°C				30°F / 16.7°C				35°F / 19.4°C			
Flow Rate		Pressure Drop		Flow Rate		Pressure Drop		Flow Rate		Pressure Drop		Flow Rate		Pressure Drop	
GPM	L/s	Ft	kPa	GPM	L/s	Ft	kPa	GPM	L/s	Ft	kPa	GPM	L/s	Ft	kPa
63.0	4.0	1.35	4.0	50.4	3.2	0.89	2.6	42.0	2.6	0.64	1.9	36.0	2.3	0.48	1.4

## WATER HEATER HOURLY RECOVERY CAPACITY (GPH & LPH)

40°F	22°C	60°F	33°C	80°F	44°C	100°F	56°C	120°F	67°C	140°F	78°C
1868	7062	1245	4708	934	3531	747	2825	623	2354	534	2018

Boilers & Water Heaters not available for sale in Canada due to NRCAN regulations.

<b>REP FIRM</b>	_____	<b>DOMINATOR 750</b>
<b>SUBMITTED BY</b>	_____	
<b>JOB NAME</b>	_____	
<b>ARCHITECT</b>	_____	
<b>ENGINEER</b>	_____	
<b>CONTRACTOR</b>	_____	
<b>DATE</b>	_____	<b>Category I or Category III Appliance</b> (see Installation and Operation Manual for venting information)
		 <b>RELIABLE. BOLD. INNOVATIVE.</b>
		A Division of Mestek, Inc. Westfield, MA 01085 (413) 564-5515



# DOMINATOR 900

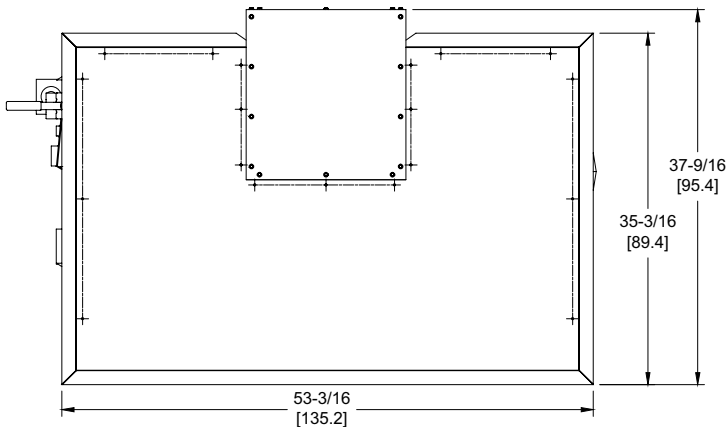
## Category I or Category III Appliance

(see Installation and Operation Manual for venting information)

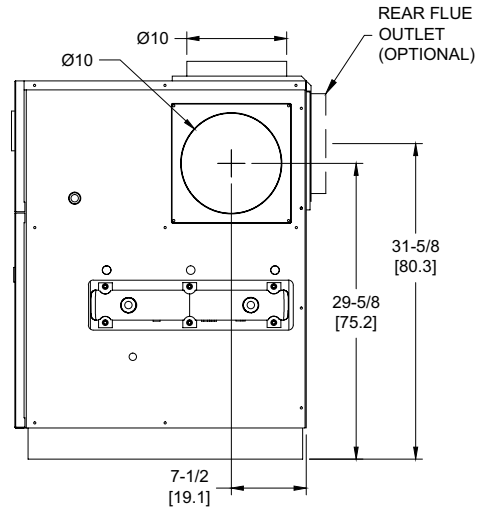
### CODE OPTIONS

CSD-1

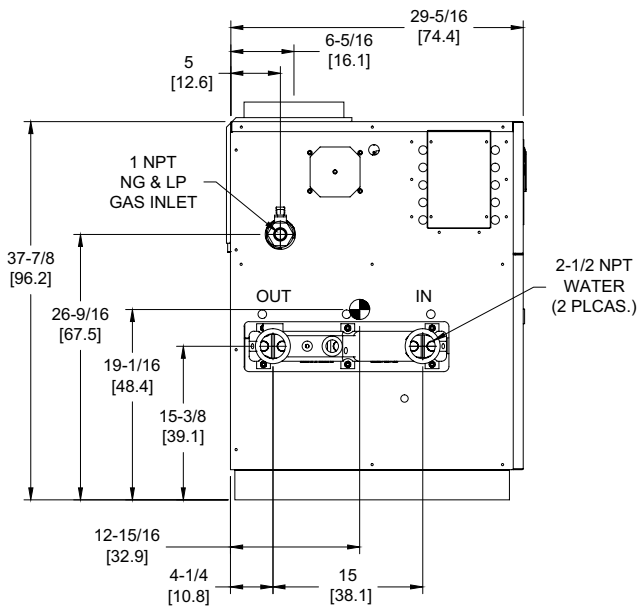
UTC Lockout/Reset Control  
Manual Reset LWCO



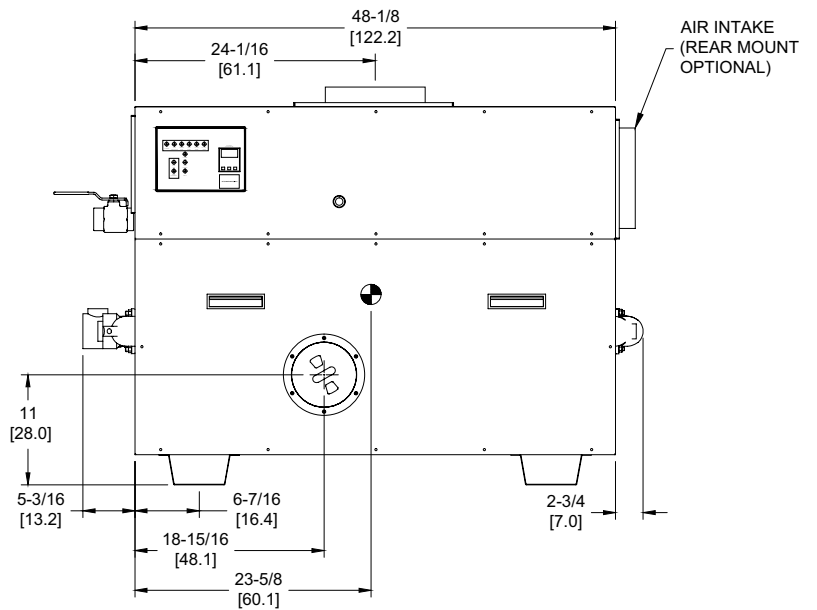
OUTDOOR TOP VIEW



RIGHT VIEW



LEFT VIEW




FRONT VIEW

RSUB-31-E

**Boilers & Water Heaters not available for sale in Canada due to NRCan regulations.**

#### Notes:

1. Dimensions are approximate and should not be used to "rough-in" equipment.
2. Dimensions are subject to change without notice.
3. All dimensions are in inches (cm).
4.  Symbol indicates center of gravity.

SDOM-900-11

## BOILER CERTIFIED RATINGS & CAPACITIES

<b>Fuel Type</b>	Natural/Propane Gas	<b>Boiler FLA</b>	5.9*
<b>Input BTU/hr.</b>	900,000 / 264 kW	<b>Min. Gas Pressure Required</b>	7" WC**
<b>Output BTU/hr.</b>	756,000 / 222 kW	<b>Max. Gas Pressure Allowed</b>	14" WC
<b>Electrical Requirements</b>	120VAC/ 1 ph/ 60 hz	<b>Operating Weight</b>	664 lbs. / 301 kg.

## BOILER / WATER HEATER TRIM & CONTROLS

<b>Main Gas Valve</b>	Honeywell V8944 1"	<b>Pilot Valve</b>	Honeywell VR8205
<b>Firing Valve</b>	Honeywell B200T1033 1"	<b>Air Switch</b>	Cleveland RSS-495
<b>Safety Valve</b>	ASCO L8214G 1"	<b>Blower Motor</b>	1/4 hp - FLA 5.1
<b>Ignition Control</b>	UTC 1003-61A	<b>Relief Valve - DW</b>	3/4" x 3/4" set @ 125 psi
<b>Operating Control</b>	Tekmar BTC-2PA	<b>Relief Valve - DB</b>	3/4" x 3/4" set @ 50 psi
<b>High Limit</b>	Honeywell L4008E	<b>Flow Switch</b>	TACO

## A.S.M.E.

<b>ASME Sect IV Htg Surface</b>	90.0 Sq. Ft. / 8.36 Sq. M.	<b>Design Data</b>	Max. 160 psig & 250°F
<b>Water Volume</b>	4.1 gal / 15.4 Liters		

\* Add circulator amps.

\*\* For incoming gas pressures lower than 7"WC natural or 11"WC propane, consult factory.


## BOILER TEMPERATURE RISE / PRESSURE DROP

20°F / 11.1°C				25°F / 13.9°C				30°F / 16.7°C				35°F / 19.4°C			
Flow Rate		Pressure Drop		Flow Rate		Pressure Drop		Flow Rate		Pressure Drop		Flow Rate		Pressure Drop	
GPM	L/s	Ft	kPa	GPM	L/s	Ft	kPa	GPM	L/s	Ft	kPa	GPM	L/s	Ft	kPa
75.6	4.8	2.20	6.5	60.5	3.8	1.46	4.3	50.4	3.2	1.04	3.1	43.2	2.7	0.78	2.3

## WATER HEATER HOURLY RECOVERY CAPACITY (GPH & LPH)

40°F	22°C	60°F	33°C	80°F	44°C	100°F	56°C	120°F	67°C	140°F	78°C
2242	8474	1495	5650	1121	4237	897	3390	747	2825	641	2421

Boilers & Water Heaters not available for sale in Canada due to NRCAN regulations.

<b>REP FIRM</b>	_____	<b>DOMINATOR 900</b>
<b>SUBMITTED BY</b>	_____	
<b>JOB NAME</b>	_____	
<b>ARCHITECT</b>	_____	
<b>ENGINEER</b>	_____	
<b>CONTRACTOR</b>	_____	
<b>DATE</b>	_____	<b>Category I or Category III Appliance</b> (see Installation and Operation Manual for venting information)
		 <b>RELIABLE. BOLD. INNOVATIVE.</b>
		A Division of Mestek, Inc. Westfield, MA 01085 (413) 564-5515

# DOMINATOR 1050

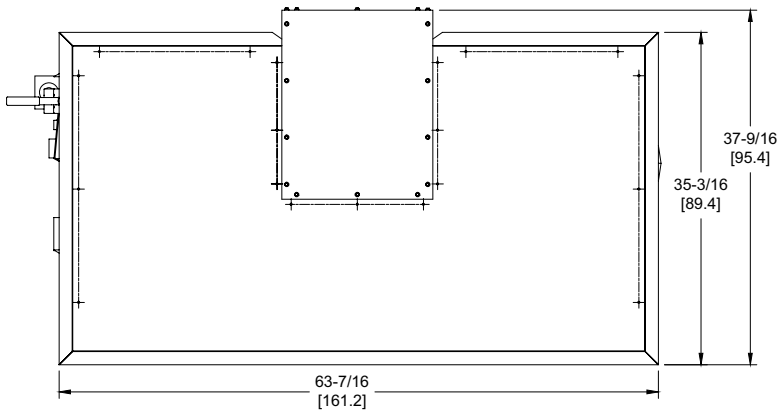
## Category I or Category III Appliance

(see Installation and Operation Manual for venting information)

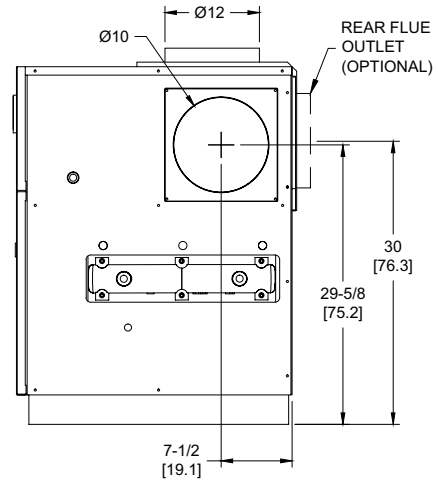
## CODE OPTIONS

CSD-1

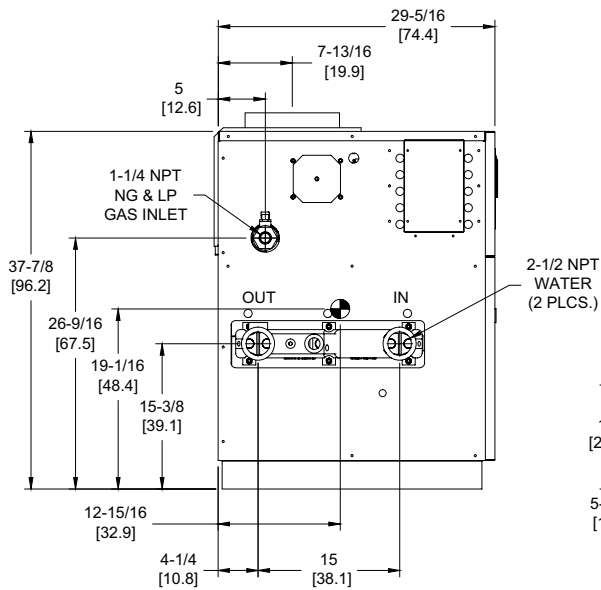
UTC Lockout/Reset Control  
Manual Reset LWCO



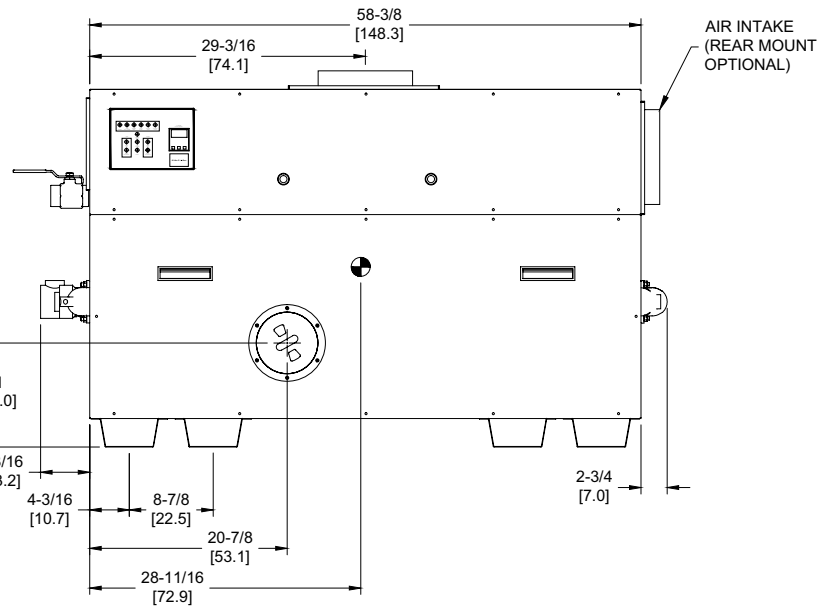
OUTDOOR TOP VIEW



RIGHT VIEW



LEFT VIEW




FRONT VIEW

RSUB-32-E

**Boilers & Water Heaters not available for sale in Canada due to NRCan regulations.**

### Notes:

1. Dimensions are approximate and should not be used to "rough-in" equipment.
2. Dimensions are subject to change without notice.
3. All dimensions are in inches (cm).
4.  Symbol indicates center of gravity.

SDOM-1050-11

## BOILER CERTIFIED RATINGS & CAPACITIES

<b>Fuel Type</b>	Natural/Propane Gas	<b>Boiler FLA</b>	11.0*
<b>Input BTU/hr.</b>	1,050,000 / 308 kW	<b>Min. Gas Pressure Required</b>	7" WC**
<b>Output BTU/hr.</b>	882,000 / 258 kW	<b>Max. Gas Pressure Allowed</b>	14" WC
<b>Electrical Requirements</b>	120VAC/ 1 ph/ 60 hz	<b>Operating Weight</b>	772 lbs. / 350 kg.

## BOILER / WATER HEATER TRIM & CONTROLS

<b>Main Gas Valve</b>	Honeywell (2) V8944 1"	<b>Pilot Valve</b>	Honeywell VR8205
<b>Firing Valve</b>	Honeywell (2) B200T1033 1"	<b>Air Switch</b>	Cleveland RSS-495
<b>Safety Valve</b>	ASCO L8214G 1-1/4"	<b>Blower Motor</b>	(2) 1/4 hp - FLA 10.2
<b>Ignition Control</b>	UTC 1003-61A	<b>Relief Valve - DW</b>	3/4" x 3/4" set @ 125 psi
<b>Operating Control</b>	Tekmar BTC-2PA	<b>Relief Valve - DB</b>	3/4" x 3/4" set @ 50 psi
<b>Operating Control</b>	Tekmar BTC-4PA	<b>Flow Switch</b>	TACO
<b>High Limit</b>	Honeywell L4008E		

## A.S.M.E.

<b>ASME Sect IV Htg Surface</b>	110.0 Sq. Ft. / 10.22 Sq. M.	<b>Design Data</b>	Max. 160 psig & 250°F
<b>Water Volume</b>	4.4 gal / 16.8 Liters		

\* Add circulator amps.

\*\* For incoming gas pressures lower than 7"WC natural or 11"WC propane, consult factory.


## BOILER TEMPERATURE RISE / PRESSURE DROP

20°F / 11.1°C				25°F / 13.9°C				30°F / 16.7°C				35°F / 19.4°C			
Flow Rate		Pressure Drop		Flow Rate		Pressure Drop		Flow Rate		Pressure Drop		Flow Rate		Pressure Drop	
GPM	L/s	Ft	kPa	GPM	L/s	Ft	kPa	GPM	L/s	Ft	kPa	GPM	L/s	Ft	kPa
88.2	5.6	3.57	10.5	70.6	4.5	2.36	7.0	58.8	3.7	1.68	5.0	50.4	3.2	1.27	3.7

## WATER HEATER HOURLY RECOVERY CAPACITY (GPH & LPH)

40°F	22°C	60°F	33°C	80°F	44°C	100°F	56°C	120°F	67°C	140°F	78°C
2584	9768	1723	6512	1292	4884	1034	3907	861	3256	738	2791

Boilers & Water Heaters not available for sale in Canada due to NRCAN regulations.

<b>REP FIRM</b>	_____	<div><b>DOMINATOR 1050</b></div> <div><b>Category I or Category III Appliance</b></div> <div>(see Installation and Operation Manual for venting information)</div> <div>  <div> A Division of Mestek, Inc.  Westfield, MA 01085  (413) 564-5515 </div> </div>
<b>SUBMITTED BY</b>	_____	
<b>JOB NAME</b>	_____	
<b>ARCHITECT</b>	_____	
<b>ENGINEER</b>	_____	
<b>CONTRACTOR</b>	_____	
<b>DATE</b>	_____	

# DOMINATOR 1350

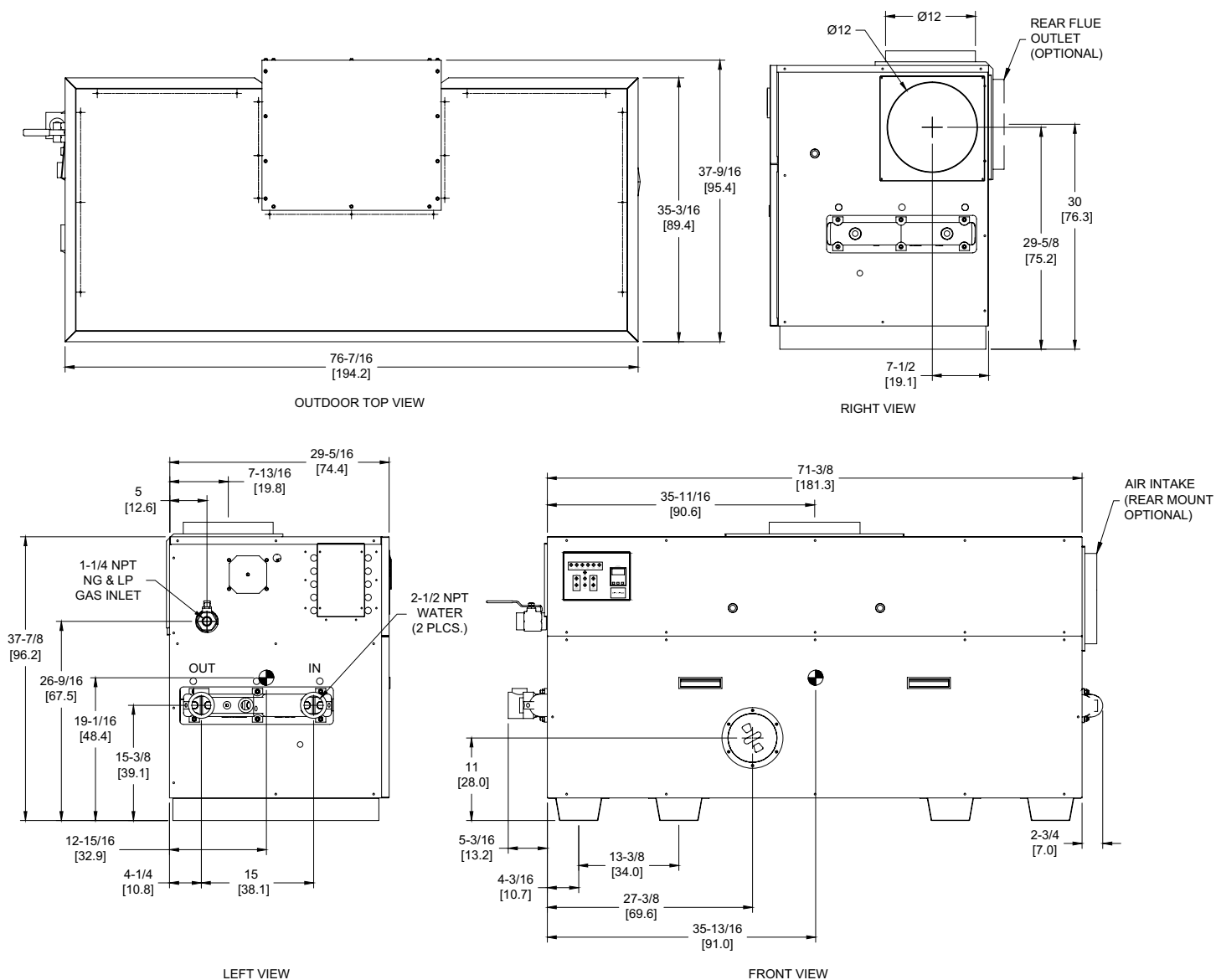
## Category I or Category III Appliance

(see Installation and Operation Manual for venting information)

## CODE OPTIONS

CSD-1

UTC Lockout/Reset Control  
Manual Reset LWCO



RSUB-33-F

**Boilers & Water Heaters not available for sale in Canada due to NRCAN regulations.**

### Notes:

1. Dimensions are approximate and should not be used to "rough-in" equipment.
2. Dimensions are subject to change without notice.
3. All dimensions are in inches (cm).
4. ● Symbol indicates center of gravity.

SDOM-1350-11

## BOILER CERTIFIED RATINGS & CAPACITIES

<b>Fuel Type</b>	Natural/Propane Gas	<b>Boiler FLA</b>	11.0*
<b>Input BTU/hr.</b>	1,350,000 / 396 kW	<b>Min. Gas Pressure Required</b>	7" WC**
<b>Output BTU/hr.</b>	1,134,000 / 332 kW	<b>Max. Gas Pressure Allowed</b>	14" WC
<b>Electrical Requirements</b>	120VAC/ 1 ph/ 60 hz	<b>Operating Weight</b>	805 lbs. / 365 kg.

## BOILER / WATER HEATER TRIM & CONTROLS

<b>Main Gas Valve</b>	Honeywell (2) V8944 1"	<b>Pilot Valve</b>	Honeywell VR8205
<b>Firing Valve</b>	Honeywell (2) B200T1033 1"	<b>Air Switch</b>	Cleveland RSS-495
<b>Safety Valve</b>	ASCO L8214G 1-1/4"	<b>Blower Motor</b>	(2) 1/4 hp - FLA 10.2
<b>Ignition Control</b>	UTC 1003-61A	<b>Relief Valve - DW</b>	3/4" x 3/4" set @ 125 psi
<b>Operating Control</b>	Tekmar BTC-2PA	<b>Relief Valve - DB</b>	3/4" x 1" set @ 50 psi
<b>Operating Control</b>	Tekmar BTC-4PA	<b>Flow Switch</b>	TACO
<b>High Limit</b>	Honeywell L4008E		

## A.S.M.E.

<b>ASME Sect IV Htg Surface</b>	136.0 Sq. Ft. / 12.63 Sq. M.	<b>Design Data</b>	Max. 160 psig & 250°F
<b>Water Volume</b>	4.8 gal / 18.2 Liters		

\* Add circulator amps.

\*\* For incoming gas pressures lower than 7"WC natural or 11"WC propane, consult factory.

## BOILER TEMPERATURE RISE / PRESSURE DROP


20°F / 11.1°C				25°F / 13.9°C				30°F / 16.7°C				35°F / 19.4°C			
Flow Rate		Pressure Drop		Flow Rate		Pressure Drop		Flow Rate		Pressure Drop		Flow Rate		Pressure Drop	
GPM	L/s	Ft	kPa	GPM	L/s	Ft	kPa	GPM	L/s	Ft	kPa	GPM	L/s	Ft	kPa
113.4†	7.2†	7.00	20.6	90.7	5.7	4.63	13.6	75.6	4.8	3.30	9.7	64.8	4.1	2.48	7.3

† Flow exceeds recommended maximum use a greater temperature rise or consult manufacturer.  
Cupronickel heat exchanger should be considered.

## WATER HEATER HOURLY RECOVERY CAPACITY (GPH & LPH)

40°F	22°C	60°F	33°C	80°F	44°C	100°F	56°C	120°F	67°C	140°F	78°C
3322	12558	2215	8372	1661	6279	1329	5023	1107	4186	949	3588

Boilers & Water Heaters not available for sale in Canada due to NRCan regulations.

<b>REP FIRM</b>	_____	<b>DOMINATOR 1350</b>
<b>SUBMITTED BY</b>	_____	
<b>JOB NAME</b>	_____	
<b>ARCHITECT</b>	_____	
<b>ENGINEER</b>	_____	
<b>CONTRACTOR</b>	_____	
<b>DATE</b>	_____	<b>Category I or Category III Appliance</b> (see Installation and Operation Manual for venting information)
		 <b>RELIABLE. BOLD. INNOVATIVE.</b>
		A Division of Mestek, Inc. Westfield, MA 01085 (413) 564-5515

# DOMINATOR 1500

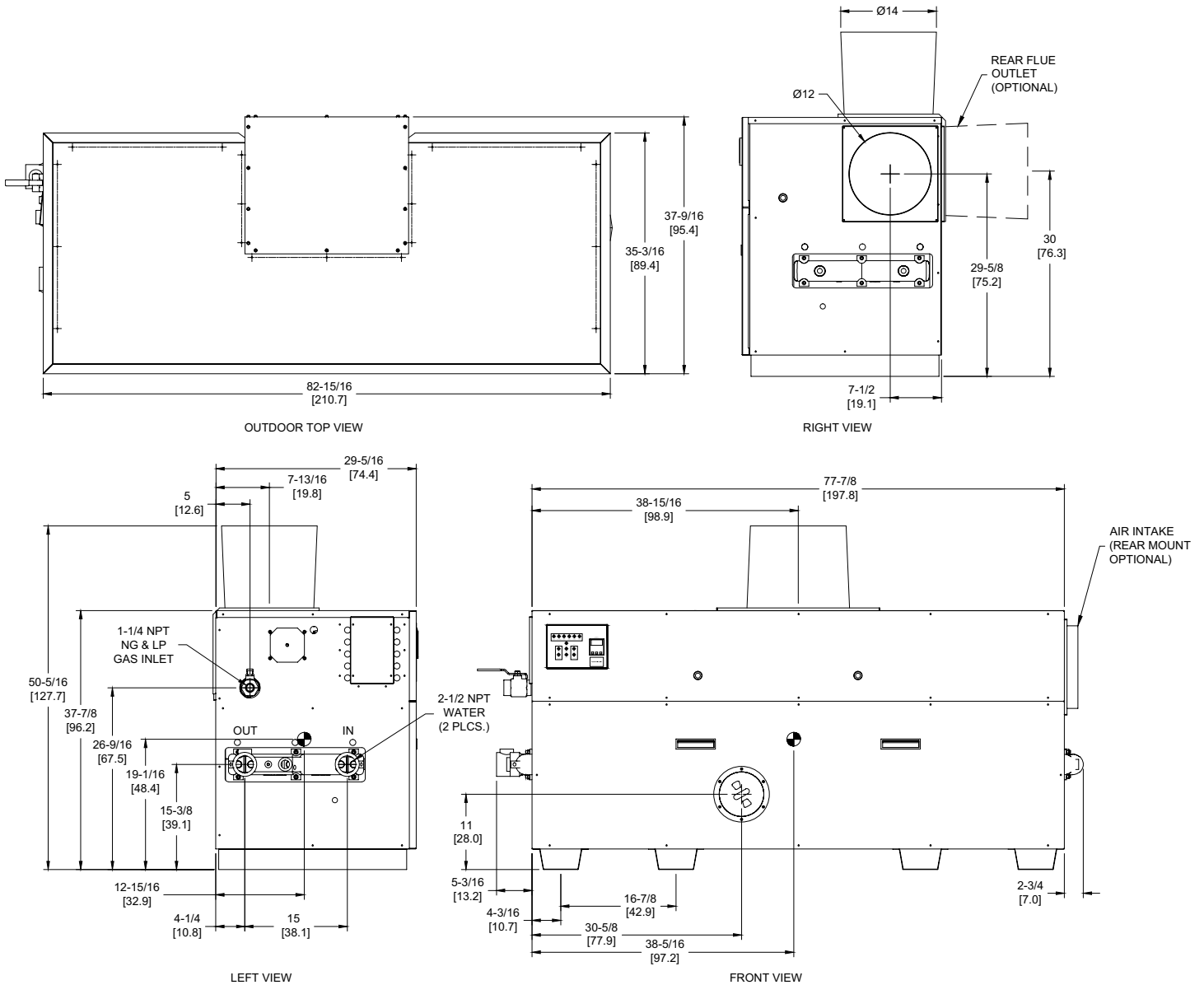
## Category I or Category III Appliance

(see Installation and Operation Manual for venting information)

### CODE OPTIONS

CSD-1

UTC Lockout/Reset Control  
Manual Reset LWCO



RSUB-34-G

**Boilers & Water Heaters not available for sale in Canada due to NRCAN regulations.**

#### Notes:

1. Dimensions are approximate and should not be used to "rough-in" equipment.
2. Dimensions are subject to change without notice.
3. All dimensions are in inches (cm).
4. ● Symbol indicates center of gravity.

SDOM-1500-12

## BOILER CERTIFIED RATINGS & CAPACITIES

<b>Fuel Type</b>	Natural/Propane Gas	<b>Boiler FLA</b>	11.0*
<b>Input BTU/hr.</b>	1,500,000 / 440 kW	<b>Min. Gas Pressure Required</b>	7" WC**
<b>Output BTU/hr.</b>	1,260,000/ 369 kW	<b>Max. Gas Pressure Allowed</b>	14" WC
<b>Electrical Requirements</b>	120VAC/ 1 ph/ 60 hz	<b>Operating Weight</b>	846 lbs. / 384 kg.

## BOILER / WATER HEATER TRIM & CONTROLS

<b>Main Gas Valve</b>	Honeywell (2) V8944 1"	<b>Pilot Valve</b>	Honeywell VR8205
<b>Firing Valve</b>	Honeywell (2) B200T1033 1"	<b>Air Switch</b>	Cleveland RSS-495
<b>Safety Valve</b>	ASCO L8214G 1-1/4"	<b>Blower Motor</b>	(2) 1/4 hp - FLA 10.2
<b>Ignition Control</b>	UTC 1003-61A	<b>Relief Valve - DW</b>	3/4" x 3/4" set @ 125 psi
<b>Operating Control</b>	Tekmar BTC-2PA	<b>Relief Valve - DB</b>	3/4" x 1" set @ 50 psi
<b>Operating Control</b>	Tekmar BTC-4PA	<b>Flow Switch</b>	TACO
<b>High Limit</b>	Honeywell L4008E		

## A.S.M.E.

<b>ASME Sect IV Htg Surface</b>	149.0 Sq. Ft. / 13.84 Sq. M.	<b>Design Data</b>	Max. 160 psig & 250°F
<b>Water Volume</b>	4.9 gal / 18.6 Liters		

\* Add circulator amps.

\*\* For incoming gas pressures lower than 7"WC natural or 11"WC propane, consult factory.

## BOILER TEMPERATURE RISE / PRESSURE DROP

25°F / 13.9°C				30°F / 16.7°C				35°F / 19.4°C			
Flow Rate		Pressure Drop		Flow Rate		Pressure Drop		Flow Rate		Pressure Drop	
GPM	L/s	Ft	kPa	GPM	L/s	Ft	kPa	GPM	L/s	Ft	kPa
100.8	6.4	6.16	18.1	84.0	5.3	4.39	12.9	72.0	4.5	3.30	9.7

## WATER HEATER HOURLY RECOVERY CAPACITY (GPH & LPH)

40°F	22°C	60°F	33°C	80°F	44°C	100°F	56°C	120°F	67°C	140°F	78°C
3691	13954	2461	9303	1846	6977	1477	5582	1230	4651	1055	3987

Boilers & Water Heaters not available for sale in Canada due to NRCan regulations.

<b>REP FIRM</b>	_____	<div><b>DOMINATOR 1500</b></div> <div><b>Category I or Category III Appliance</b></div> <div>(see Installation and Operation Manual for venting information)</div> <div>  <div> A Division of Mestek, Inc.  Westfield, MA 01085  (413) 564-5515 </div> </div>
<b>SUBMITTED BY</b>	_____	
<b>JOB NAME</b>	_____	
<b>ARCHITECT</b>	_____	
<b>ENGINEER</b>	_____	
<b>CONTRACTOR</b>	_____	
<b>DATE</b>	_____	



# DOMINATOR 1950

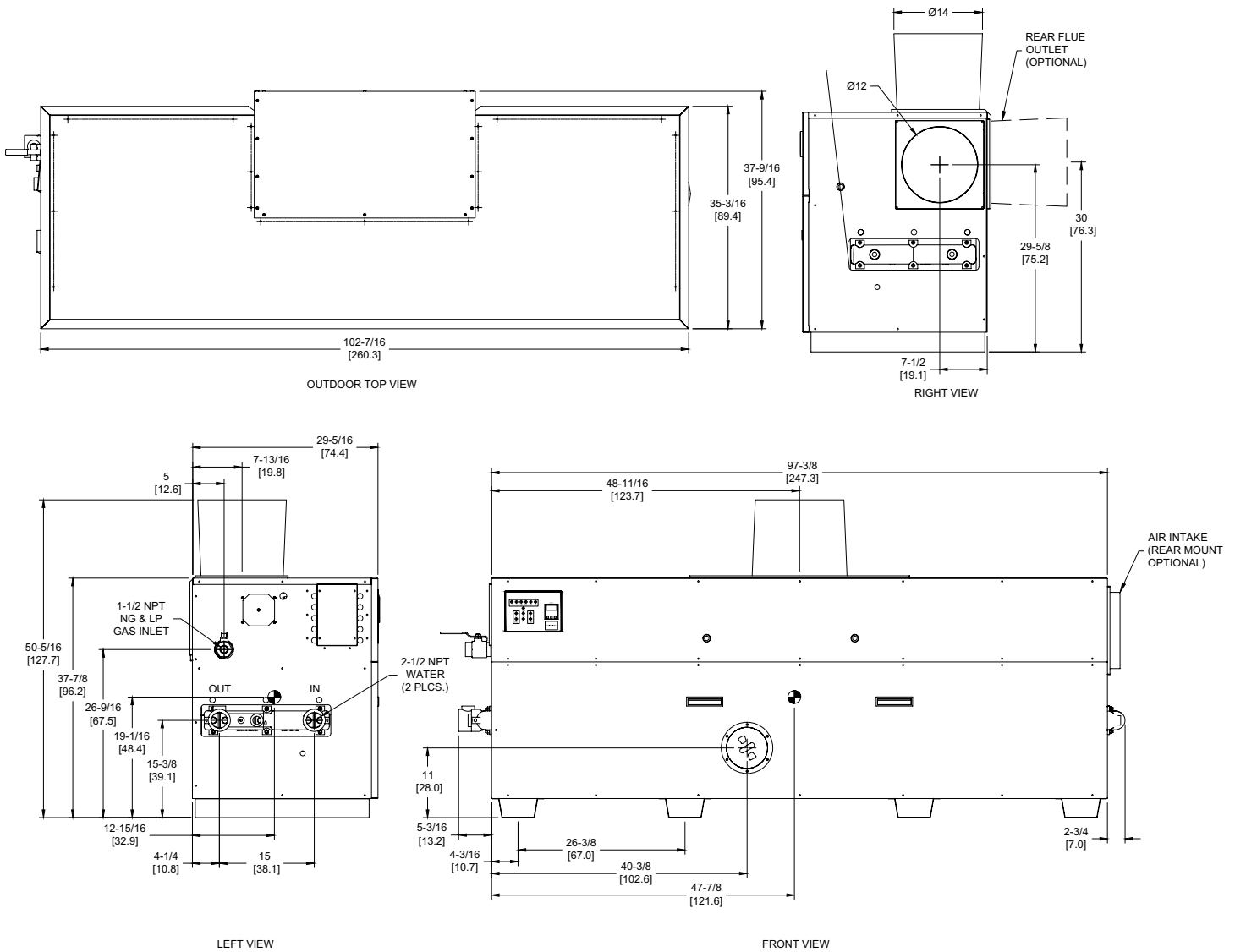
## Category I or Category III Appliance

(see Installation and Operation Manual for venting information)

### CODE OPTIONS

CSD-1


UTC Lockout/Reset Control  
Manual Reset LWCO



RSUB-35-G

**Boilers & Water Heaters not available for sale in Canada due to NRCan regulations.**

#### Notes:

1. Dimensions are approximate and should not be used to "rough-in" equipment.
2. Dimensions are subject to change without notice.
3. All dimensions are in inches (cm).
4.  Symbol indicates center of gravity.

SDOM-1950-12

## BOILER CERTIFIED RATINGS & CAPACITIES

<b>Fuel Type</b>	Natural/Propane Gas	<b>Boiler FLA</b>	11.0*
<b>Input BTU/hr.</b>	1,950,000 / 572 kW	<b>Min. Gas Pressure Required</b>	7" WC**
<b>Output BTU/hr.</b>	1,638,000 / 480 kW	<b>Max. Gas Pressure Allowed</b>	14" WC
<b>Electrical Requirements</b>	120VAC/ 1 ph/ 60 hz	<b>Operating Weight</b>	1088 lbs. / 494 kg.

## BOILER / WATER HEATER TRIM & CONTROLS

<b>Main Gas Valve</b>	Honeywell (2) V8944 1"	<b>Pilot Valve</b>	Honeywell VR8205
<b>Firing Valve</b>	Honeywell (2) B200T1033 1"	<b>Air Switch</b>	Cleveland RSS-495
<b>Safety Valve</b>	ASCO L8214G 1-1/2"	<b>Blower Motor</b>	(2) 1/4 hp - FLA 10.2
<b>Ignition Control</b>	UTC 1003-61A	<b>Relief Valve - DW</b>	3/4" x 3/4" set @ 125 psi
<b>Operating Control</b>	Tekmar BTC-2PA	<b>Relief Valve - DB</b>	3/4" x 1-1/4" set @ 50 psi
<b>Operating Control</b>	Tekmar BTC-4PA	<b>Flow Switch</b>	TACO
<b>High Limit</b>	Honeywell L4008E		

## A.S.M.E.

<b>ASME Sect IV Htg Surface</b>	189.0 Sq. Ft. / 17.56 Sq. M.	<b>Design Data</b>	Max. 160 psig & 250°F
<b>Water Volume</b>	5.4 gal / 20.4 Liters		

\* Add circulator amps.

\*\* For incoming gas pressures lower than 7"WC natural or 11"WC propane, consult factory.

## BOILER TEMPERATURE RISE / PRESSURE DROP


30°F / 16.7°C				35°F / 19.4°C			
Flow Rate		Pressure Drop		Flow Rate		Pressure Drop	
GPM	L/s	Ft	kPa	GPM	L/s	Ft	kPa
109.2†	6.9†	8.98	26.4	93.6	5.9	6.75	19.9

† Flow exceeds recommended maximum use a greater temperature rise or consult manufacturer.  
Cupronickel heat exchanger should be considered.

## WATER HEATER HOURLY RECOVERY CAPACITY (GPH & LPH)

40°F	22°C	60°F	33°C	80°F	44°C	100°F	56°C	120°F	67°C	140°F	78°C
4799	18140	3199	12093	2399	9070	1920	7256	1600	6047	1371	5183

Boilers & Water Heaters not available for sale in Canada due to NRCAN regulations.

<b>REP FIRM</b>	_____	<b>DOMINATOR 1950</b>
<b>SUBMITTED BY</b>	_____	
<b>JOB NAME</b>	_____	
<b>ARCHITECT</b>	_____	
<b>ENGINEER</b>	_____	
<b>CONTRACTOR</b>	_____	
<b>DATE</b>	_____	<b>Category I or Category III Appliance</b> (see Installation and Operation Manual for venting information)
		 <b>RELIABLE. BOLD. INNOVATIVE.</b>
		A Division of Mestek, Inc. Westfield, MA 01085 (413) 564-5515

# DOMINATOR 2100

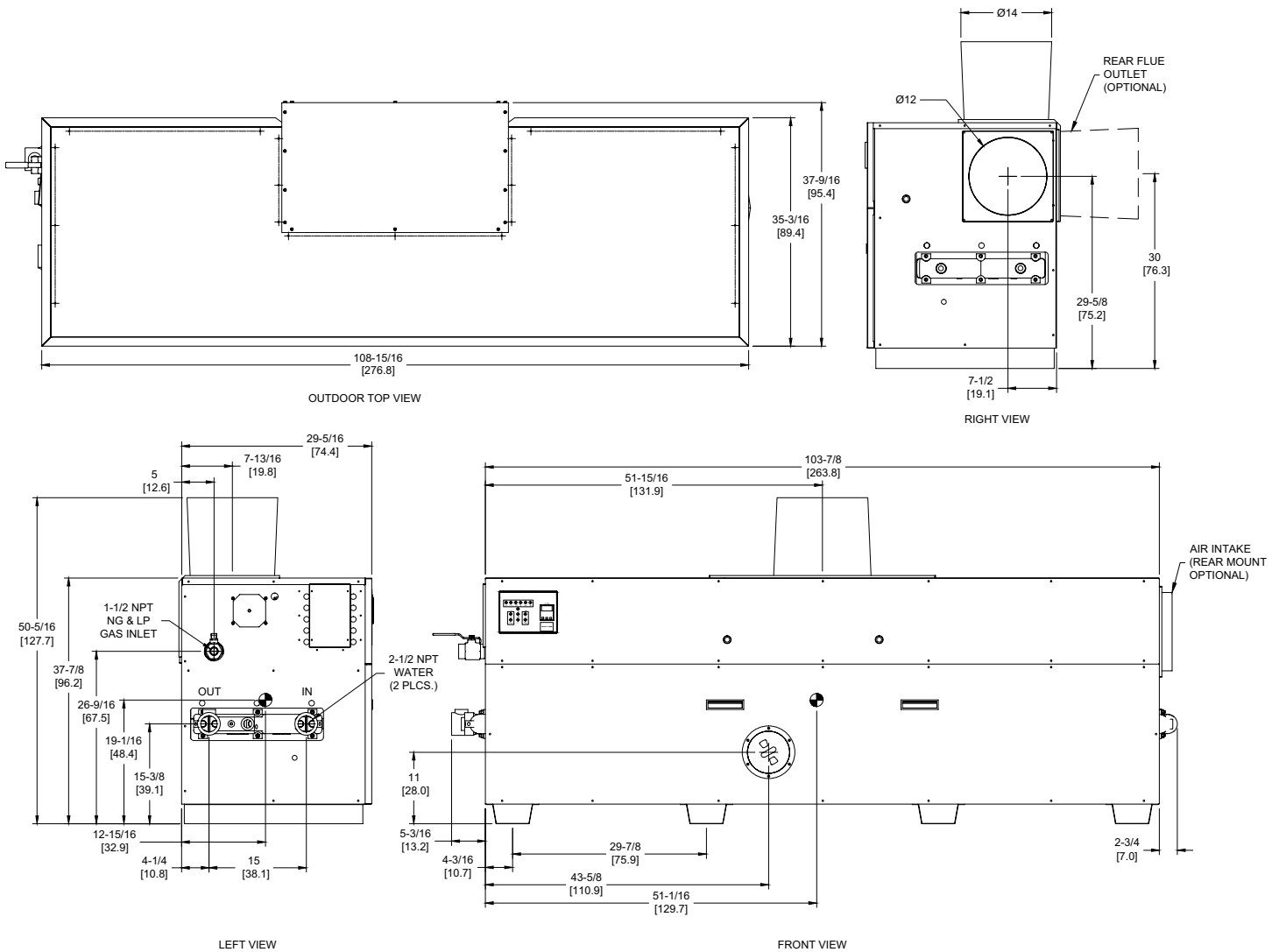
## Category I or Category III Appliance

(see Installation and Operation Manual for venting information)

### CODE OPTIONS

CSD-1

UTC Lockout/Reset Control  
Manual Reset LWCO



RSUB-36-G

**Boilers & Water Heaters not available for sale in Canada due to NRCAN regulations.**

#### Notes:

1. Dimensions are approximate and should not be used to "rough-in" equipment.
2. Dimensions are subject to change without notice.
3. All dimensions are in inches (cm).
4. Symbol indicates center of gravity.

SDOM-2100-12

## BOILER CERTIFIED RATINGS & CAPACITIES

<b>Fuel Type</b>	Natural/Propane Gas	<b>Boiler FLA</b>	11.0*
<b>Input BTU/hr.</b>	2,100,000 / 616 kW	<b>Min. Gas Pressure Required</b>	7" WC**
<b>Output BTU/hr.</b>	1,764,000 / 517 kW	<b>Max. Gas Pressure Allowed</b>	14" WC
<b>Electrical Requirements</b>	120VAC/ 1 ph/ 60 hz	<b>Operating Weight</b>	1105 lbs. / 502 kg.

## BOILER / WATER HEATER TRIM & CONTROLS

<b>Main Gas Valve</b>	Honeywell (2) V8944 1-1/4"	<b>Pilot Valve</b>	Honeywell VR8205
<b>Firing Valve</b>	Honeywell (2) B200T1041 1-1/4"	<b>Air Switch</b>	Cleveland RSS-495
<b>Safety Valve</b>	ASCO L8214G 1-1/2"	<b>Blower Motor</b>	(2) 1/4 hp - FLA 10.2
<b>Ignition Control</b>	UTC 1003-61A	<b>Relief Valve - DW</b>	3/4" x 3/4" set @ 125 psi
<b>Operating Control</b>	Tekmar BTC-2PA	<b>Relief Valve - DB</b>	3/4" x 1-1/4" set @ 50 psi
<b>Operating Control</b>	Tekmar BTC-4PA	<b>Flow Switch</b>	TACO
<b>High Limit</b>	Honeywell L4008E		

## A.S.M.E.

<b>ASME Sect IV Htg Surface</b>	202.0 Sq. Ft. / 18.77 Sq. M.	<b>Design Data</b>	Max. 160 psig & 250°F
<b>Water Volume</b>	5.6 gal / 21.4 Liters		

\* Add circulator amps.

\*\* For incoming gas pressures lower than 7"WC natural or 11"WC propane, consult factory.

## BOILER TEMPERATURE RISE / PRESSURE DROP


30°F / 16.7°C				35°F / 19.4°C			
Flow Rate		Pressure Drop		Flow Rate		Pressure Drop	
GPM	L/s	Ft	kPa	GPM	L/s	Ft	kPa
117.6†	7.4†	11.00	32.4	100.8	6.4	8.27	24.4

† Flow exceeds recommended maximum use a greater temperature rise or consult manufacturer.  
Cupronickel heat exchanger should be considered.

## WATER HEATER HOURLY RECOVERY CAPACITY (GPH & LPH)

40°F	22°C	60°F	33°C	80°F	44°C	100°F	56°C	120°F	67°C	140°F	78°C
5168	19535	3445	13024	2584	9768	2067	7814	1723	6512	1477	5582

Boilers & Water Heaters not available for sale in Canada due to NRCAN regulations.

<b>REP FIRM</b>	_____	<b>DOMINATOR 2100</b>
<b>SUBMITTED BY</b>	_____	
<b>JOB NAME</b>	_____	
<b>ARCHITECT</b>	_____	
<b>ENGINEER</b>	_____	
<b>CONTRACTOR</b>	_____	
<b>DATE</b>	_____	<b>Category I or Category III Appliance</b> (see Installation and Operation Manual for venting information)
		 <b>RELIABLE. BOLD. INNOVATIVE.</b>
		A Division of Mestek, Inc. Westfield, MA 01085 (413) 564-5515